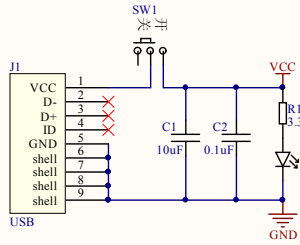
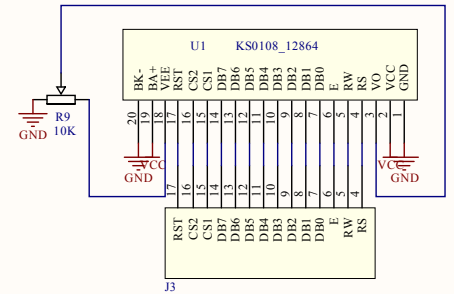
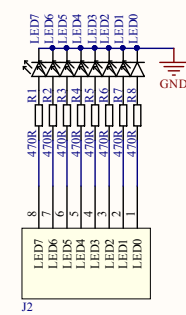
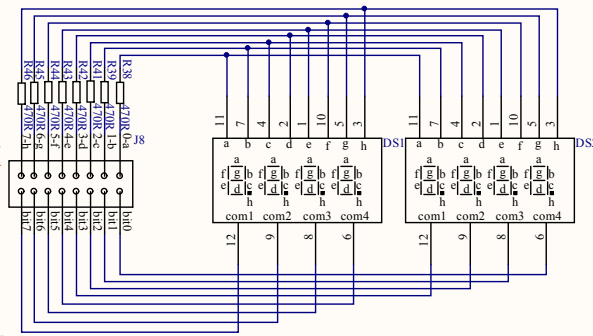


坚鸿51学习板（第三版）

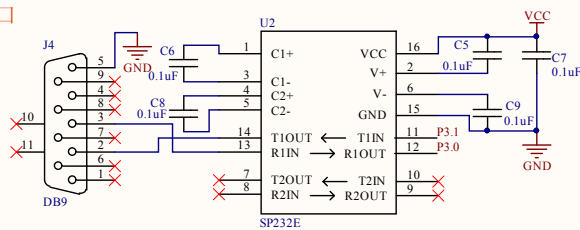
电源



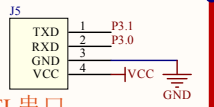
跳线区



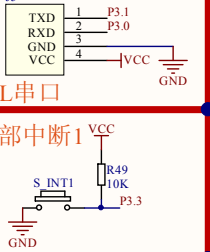
232串口



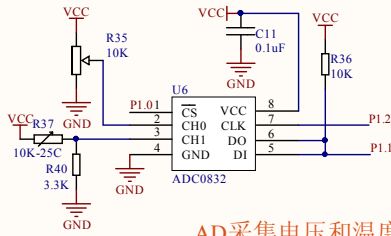
TTL串口



外部中断1

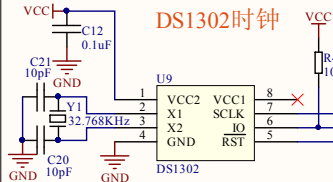


AD采集电压和温度

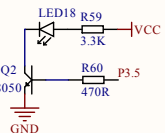


STC89C52RC单片机的最小系统

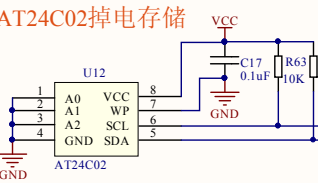
坚鸿51单片机QQ群：184876577



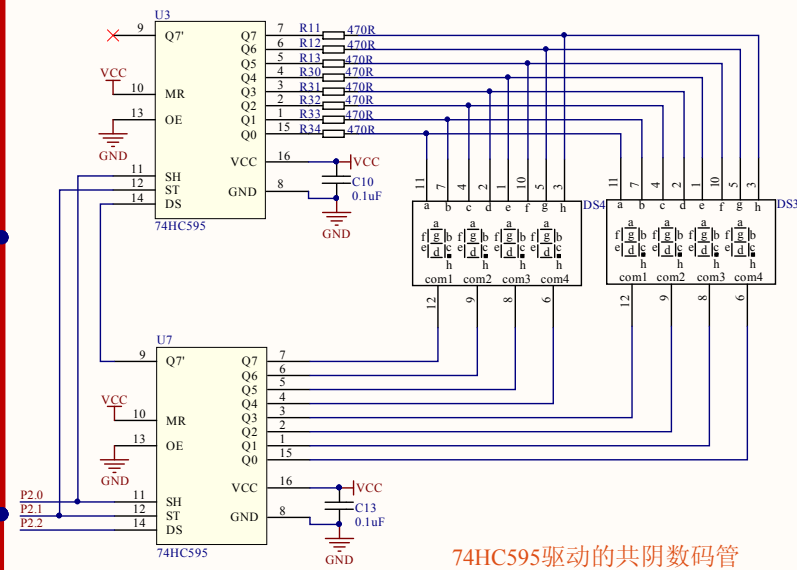
独立LED



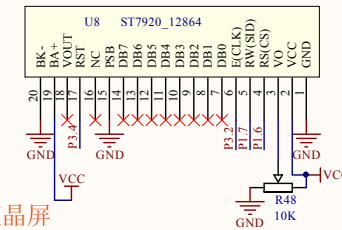
AT24C02掉电存储



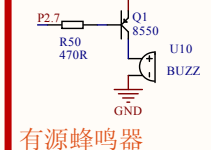
74HC595驱动的共阴数码管



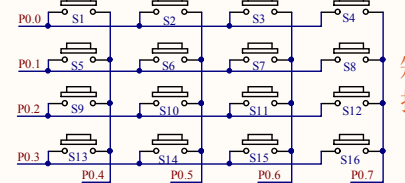
ST7920的12864液晶屏



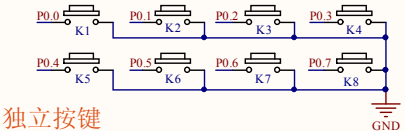
有源蜂鸣器



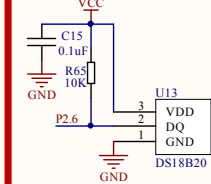
矩阵按键



独立按键



DS18B20温度芯片



Title			
Size	A3	Number	
Date:	2015-6-2	Sheet of	
File:	E:\2015年项目\Sheet1.SchDoc	Drawn By:	